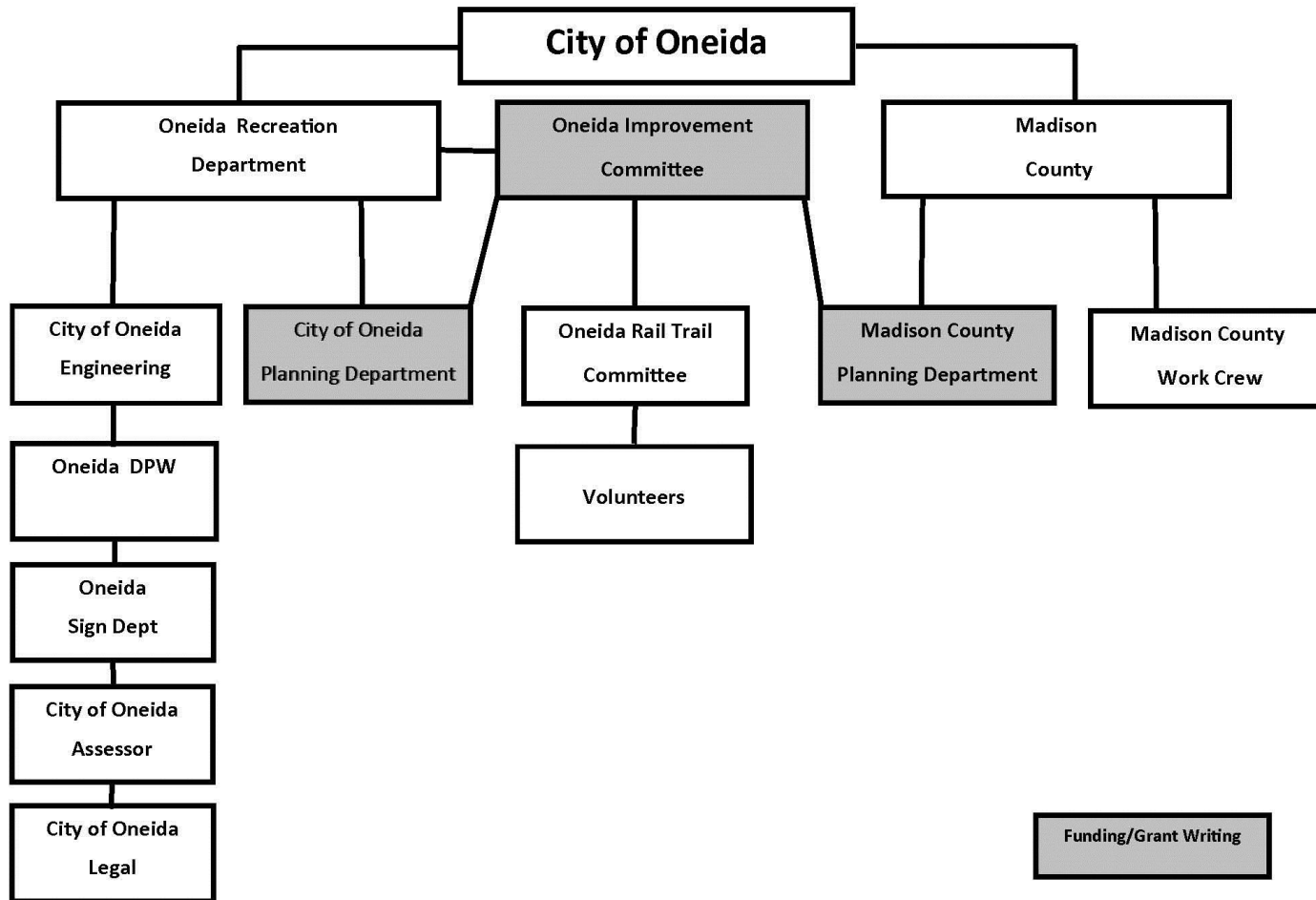


ONEIDA RAIL TRAIL

Repurposing
an existing
historic asset
as a new
community
destination



Oneida Rail Trail Structure



WE WON!

COMMUNITY PROJECT

Voted #1 Project
CNY Community Foundation
Grant December 2012



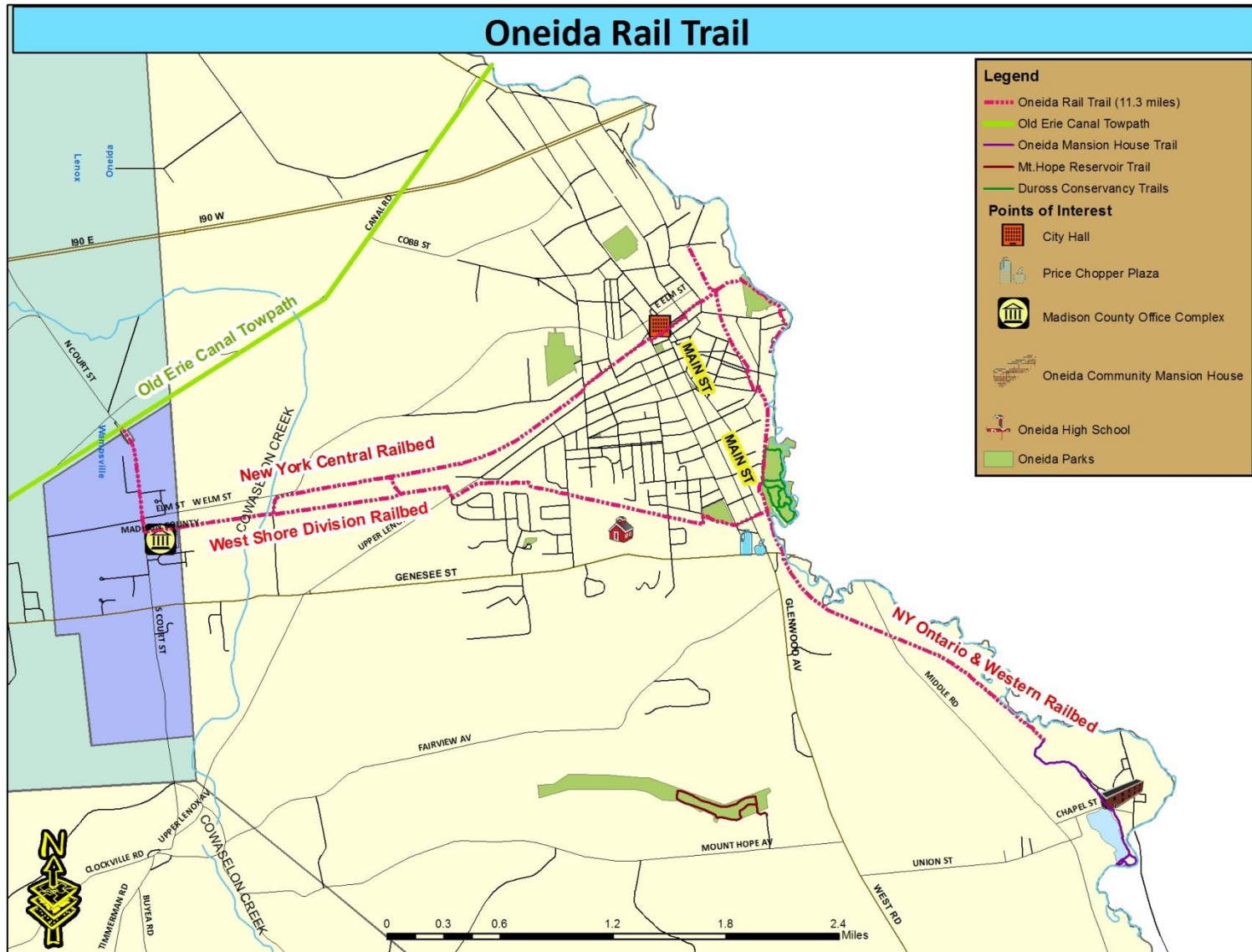
Identified in the City of Oneida
Comprehensive Plan:

“Formerly
designate railroad
right-of-ways as
greenways and
initiate
implementation
of trail system.”



**Thank you for
your votes!**

Oneida Rail Trail



Map prepared by the Madison County Planning Department

Date: 5/4/2016

Connecting people....



To Community Destinations



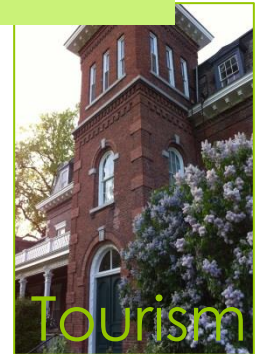
Neighborhoods



Downtown



Nature



Tourism



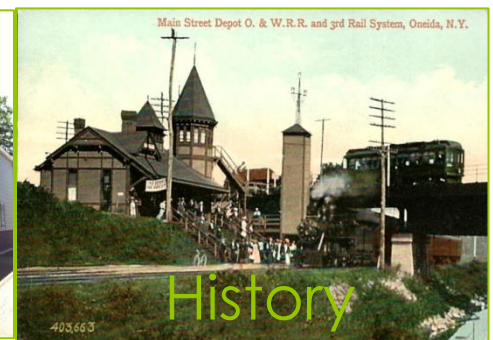
Parks



Schools

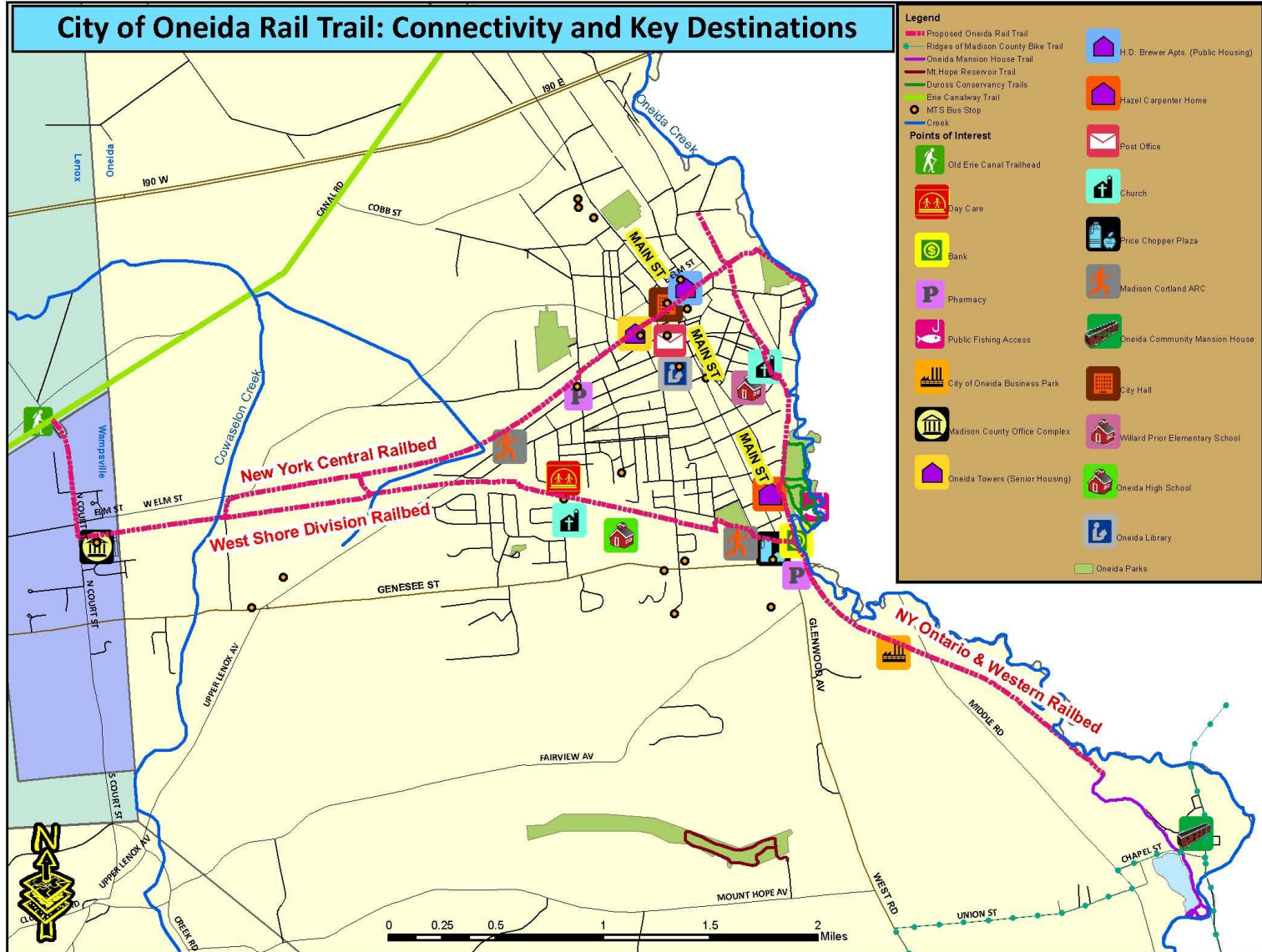


Shopping



History

Connectivity



Map prepared by the Madison County Planning Department

Date: 8/20/2013

City of Oneida Rail Trail: Historical Significance

Legend

- Proposed Oneida Rail Trail
- Oneida Parks
- Duross Conservancy Trails
- Oneida Mansion House Trail



Looking east in 1919
Red Bank Water Reservoir when it was in active use in 1919. The NYC mainline is in the left distance, the West Shore line on the right.



New York Central Rail Station

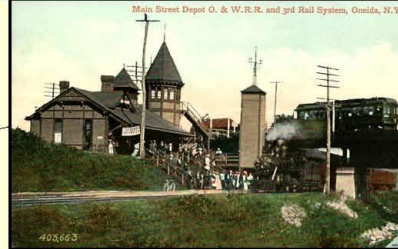


NY Ontario and Western Railroad Station

Former National Casket Company located along the New York Central Railline



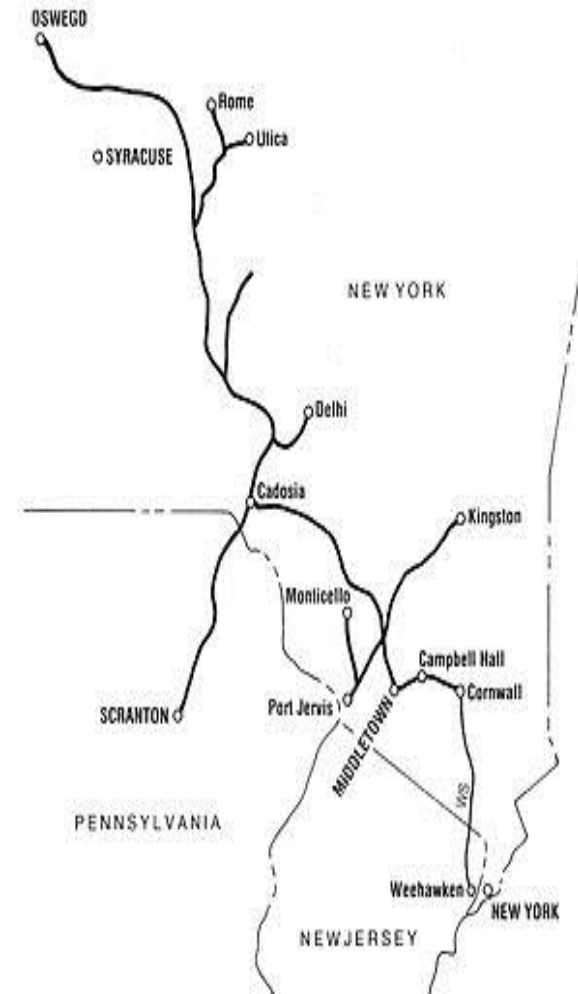
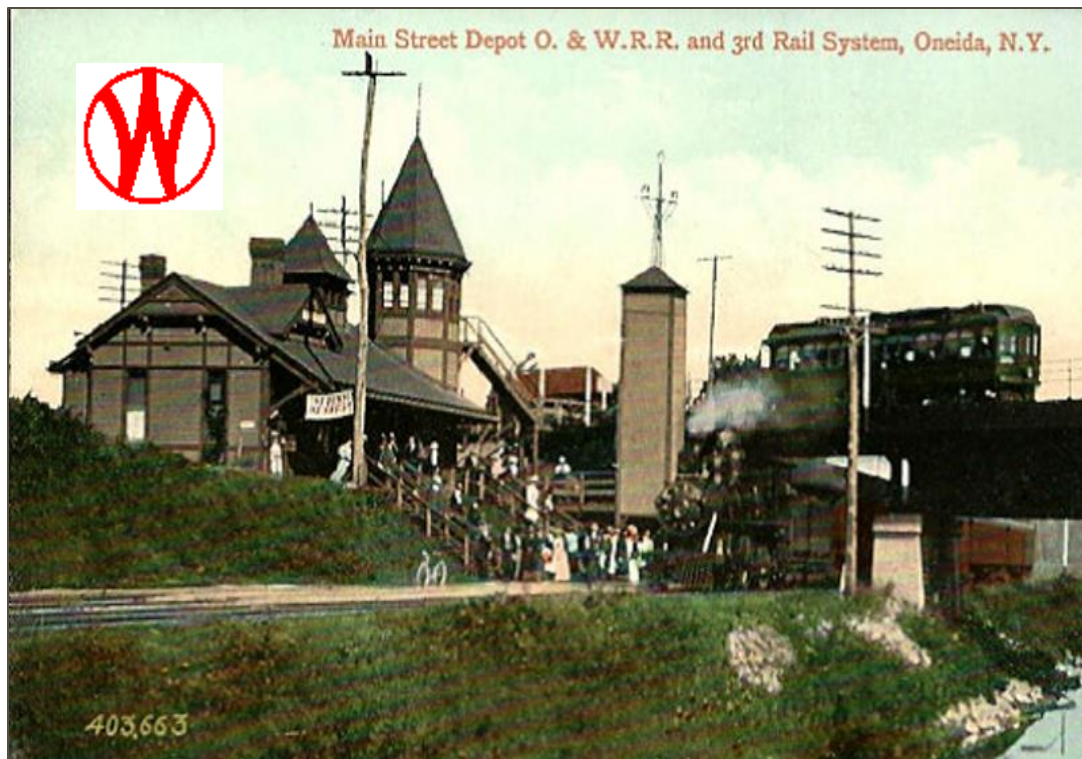
Main Street looking north in 1900's
Main Street Depot and NY Ontario & Western Railroad



Note: Railroads played an important part in the development of New York State by facilitating trade and westward expansion. Rail Trails are a way to preserve these railway corridors and offer future generations the chance to connect to the past and learn about history. This map represents just some of the many locations that could be highlighted on the historical kiosks along the Oneida Rail Trail.

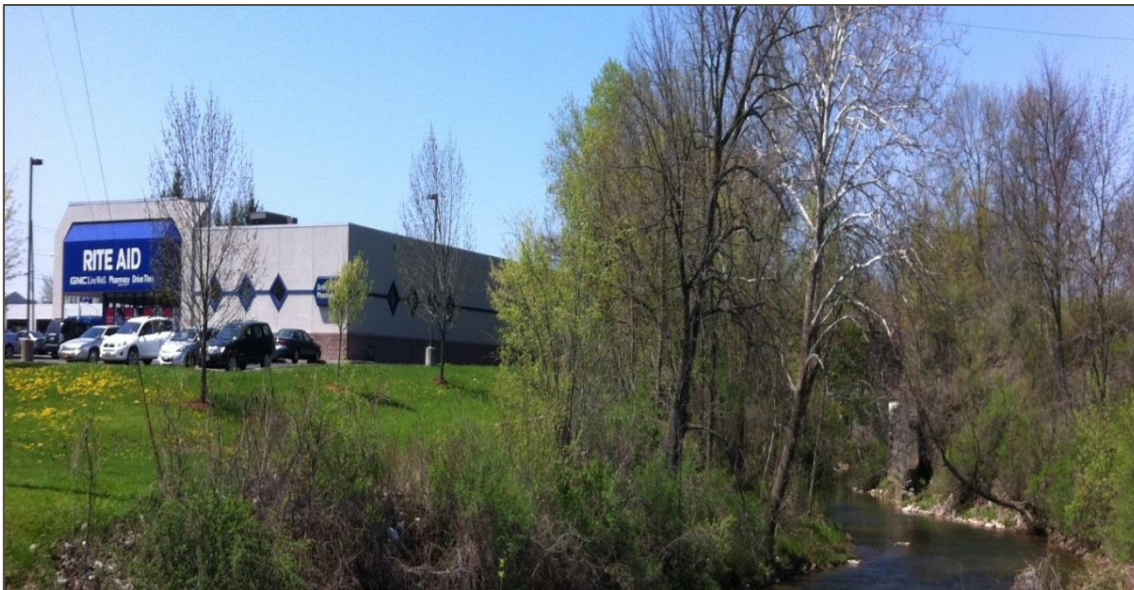
New York, Ontario & Western Railway

- Established in 1873 – March 29, 1957
- Developed tourism to Catskills and Sylvan Beach.
- Oswego was hoped to develop as a great port to the west
- Tourism all but ceased with Great Depression
- Scranton, PA coal mines provided revenue
- Coal mines failed in 1937



Historical Spot of the NYO&WRy Today

Plans include an
NYO&WRy
historical Kiosk/Rail
themed Bike Rack



NYO&WRy Station Wilson Street



New York Central Railroad

- Established 1839 – 1968
- 1839 Sands Higinbotham negotiates that every train stop in Oneida
- Faster service than the Erie Canal – Extensive & time consuming locks
- Prohibited from carrying freight until ban dropped in 1858



West Shore Railroad

- Established 1883 – 1886
- Organized as a competitor to the NY Central
- 1886 bought by NY Central
- 1907 3rd rail electrified service between Utica/Syracuse
- 1959 Passenger service ends



10 Principles of Smart Growth

1. Mix Land Uses
2. Take Advantage of Compact Design
3. Create a Range of Housing Opportunities and Choices
4. Create Walkable Communities
5. Foster Distinctive, Attractive Communities with a Strong Sense of Place
6. Preserve Open Space, Farmland, Natural Beauty, and Critical Environmental Areas
7. Strengthen and Direct Development Toward Existing Communities
8. Provide a Variety of Transportation Options
9. Make Development Decisions Predictable, Fair and Cost Effective
10. Encourage Community and Stakeholder Collaboration



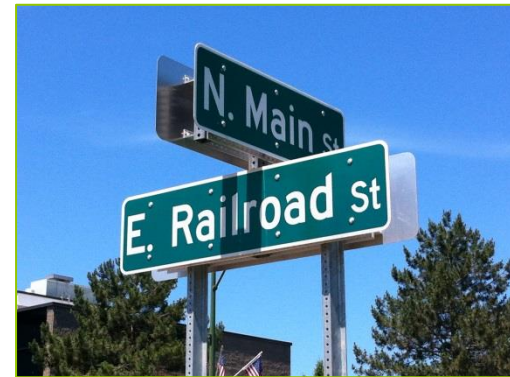
Benefits of Greenways and Trails



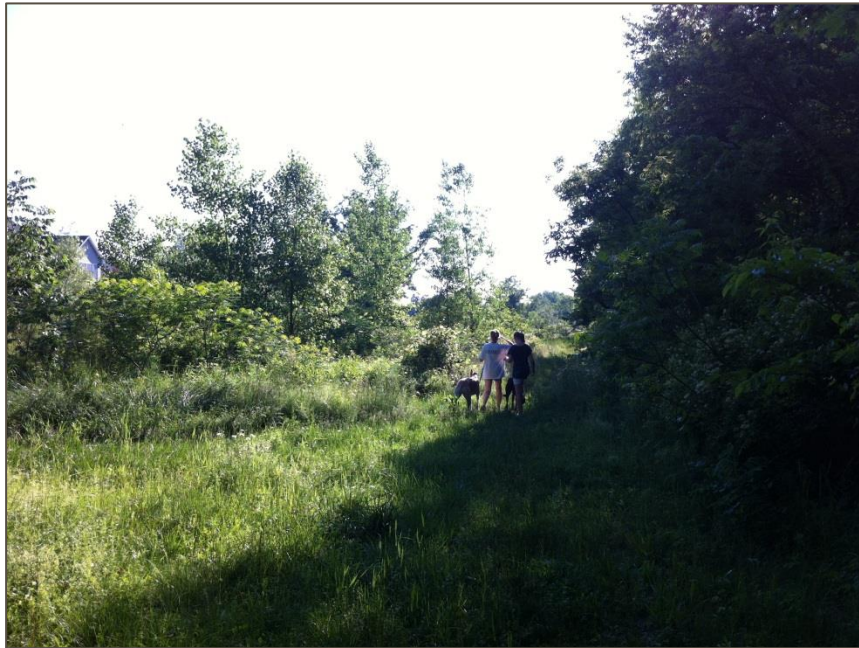
New York Central Railbed
takes trail users through
the heart of
Oneida's downtown

Trails can

- Boost local economies



Benefits of Greenways and Trails



West Shore Railbed
adjacent to Hunt Valley Rd. Subdivision

Trails can

- Boost local economies
- Improve quality of life



New York Central Railbed
along Liberty St. and adjacent to Oneida Towers

Benefits of Greenways and Trails



West Shore Railbed
at Sayles St. adjacent to Oneida
High School

Trails can

- Boost local economies
- Improve quality of life
- Good for health



West Shore Railbed
at Hubbard Pl.

Benefits of Greenways and Trails



West Shore Railroad at
culvert overpass
adjacent to Oneida High School

Trails can

- Boost local economies
- Improve quality of life
- Good for health
- Good for environment



West Shore Railroad at Cowaselon Creek

Benefits of Greenways and Trails



NYCRR between
N. Willow St. & Hubbard Place
Heading west to Wampsville

Trails can

- Boost local economies
- Improve quality of life
- Good for health
- Good for environment
- Better way to get around



NY Ontario & Western RR to Mansion House

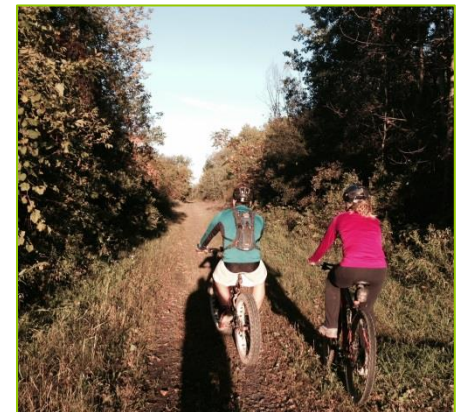
Benefits of Greenways and Trails



West Shore bridge with remains of
Oneida Railway Company markings -
ORCo 1902 cast in concrete,
The only remaining historical artifact known

Trails can

- Boost local economies
- Improve quality of life
- Good for health
- Good for environment
- Better way to get around
- Preserve historic heritage



Benefits of Greenways and Trails



2013 Trail Clean-up Days

Trails can

- Boost local economies
- Improve quality of life
- Good for health
- Good for environment
- Better way to get around
- Preserve historic heritage
- Enhance civic engagement

The Possibilities...



[https://www.youtube.com/watch?feature=player_embedded
&v=sATiMYWQtG4](https://www.youtube.com/watch?feature=player_embedded&v=sATiMYWQtG4)



ONEIDA IMPROVEMENT COMMITTEE

P.O. BOX 55 ONEIDA, NEW YORK 13421

- **Incorporated as a 501(c)(4) Civic Organization in 1992**
- **Octoberfest, Oneida Block Party**
- **Donated over \$40K in the community since 2000**
- **Donations to Memorial Day Parade, Greater Kallet Civic Center**
- **Purchased 1929 Worlds Fair benches and ornamental light poles in Higinbotham Park, Hanging Flower Baskets Downtown Oneida**
- **Reorganized as a 501(c)(3) October 2012**
- **Ability to pursue grants – Donations Tax Deductible**

We Need YOU !

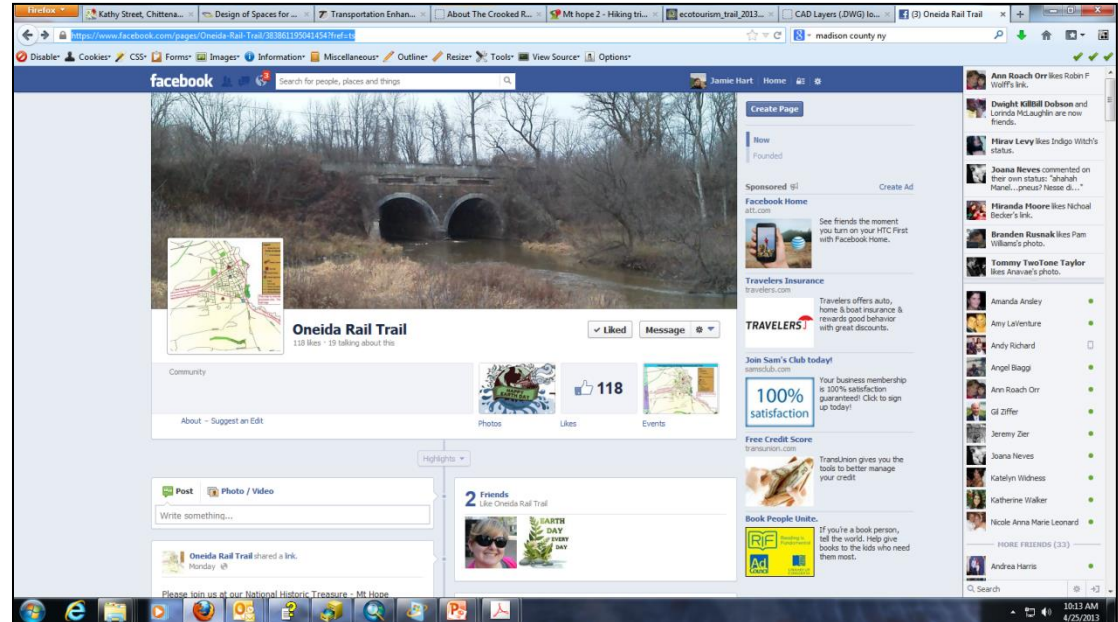
HOW CAN I HELP?

- Join the Oneida Rail Trail Facebook page!
- Volunteer – Sign up Sheet
- Send a letter of Support for the Oneida Rail Trail!



**OWEN W.
SAYS
WE NEED YOU!**

Volunteers!



“If there is one essential ingredient to creating trails and trail systems, it’s people. All the land and financing in the world won’t blaze a trail if there aren’t people championing the project.”

- Bay Area Ridge Trail Council