



C&S Engineers, Inc.
499 Col. Eileen Collins Blvd.
Syracuse, New York 13212
Phone: 315-455-2000
Fax: 315-455-9667
www.cscos.com

NOT FOR
CONSTRUCTION

**ONEIDA RAIL TRAIL
PROJECT**
PIN 2650.45, 2650.48
CITY OF ONEIDA, NEW YORK

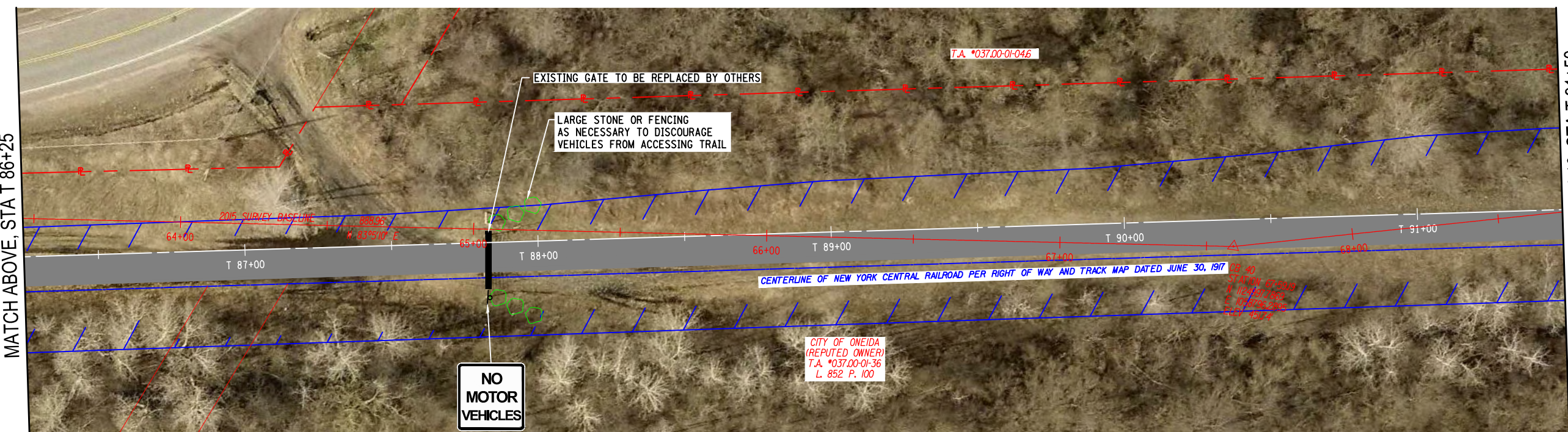
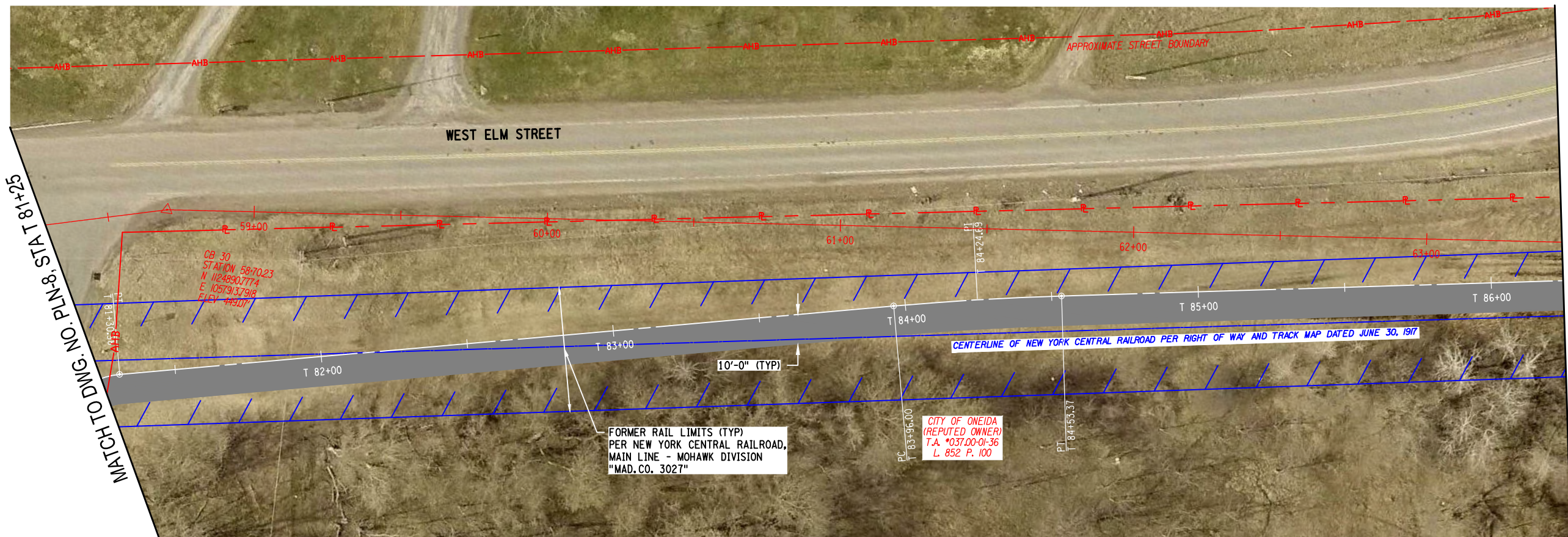
MARK	DATE	DESCRIPTION
REVISIONS		
		PROJECT NO: E42.002.001
		DATE: JANUARY 2016
		DRAWN BY: KAH
		DESIGNED BY: MAA
		CHECKED BY: XXX
NO ALTERATION PERMITTED HEREON EXCEPT AS PROVIDED UNDER SECTION 7209 SUBDIVISION 2 OF THE NEW YORK EDUCATION LAW		

**TRAIL
PLAN**

PLN-9

SHEET OF

Copyright ©



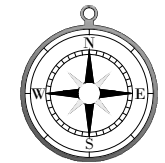
Jan 26, 2016 - 12:23pm - C:\PROJECTS\42 - CITY OF ONEIDA\42.002.001 Oneida Rail Trail\Design\CADD\Sheet Files\265048_PLN_09.dwg

1

2

3

4



C&S Engineers, Inc.
 499 Col. Eileen Collins Blvd.
 Syracuse, New York 13212
 Phone: 315-455-2000
 Fax: 315-455-9667
 www.cscos.com

**NOT FOR
CONSTRUCTION**

**ONEIDA RAIL TRAIL
PROJECT**
PIN 2650.45, 2650.48
CITY OF ONEIDA, NEW YORK

MARK	DATE	DESCRIPTION
REVISIONS		

PROJECT NO: E42.002.001
 DATE: JANUARY 2016
 DRAWN BY: KAH
 DESIGNED BY: MAA
 CHECKED BY: XXX
 NO ALTERATION PERMITTED HEREON
 EXCEPT AS PROVIDED UNDER SECTION
 7209 SUBDIVISION 2 OF THE NEW YORK
 EDUCATION LAW

**TRAIL
PLAN**

PLN-10

SHEET OF

Copyright ©

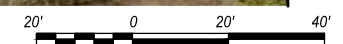
MATCH TO DWG. NO. PLN-9, STA T 91+50

MATCH BELOW, STA T 96+75



MATCH ABOVE, STA T 96+75

MATCH TO DWG. NO. PLN-11, STA T 102+00



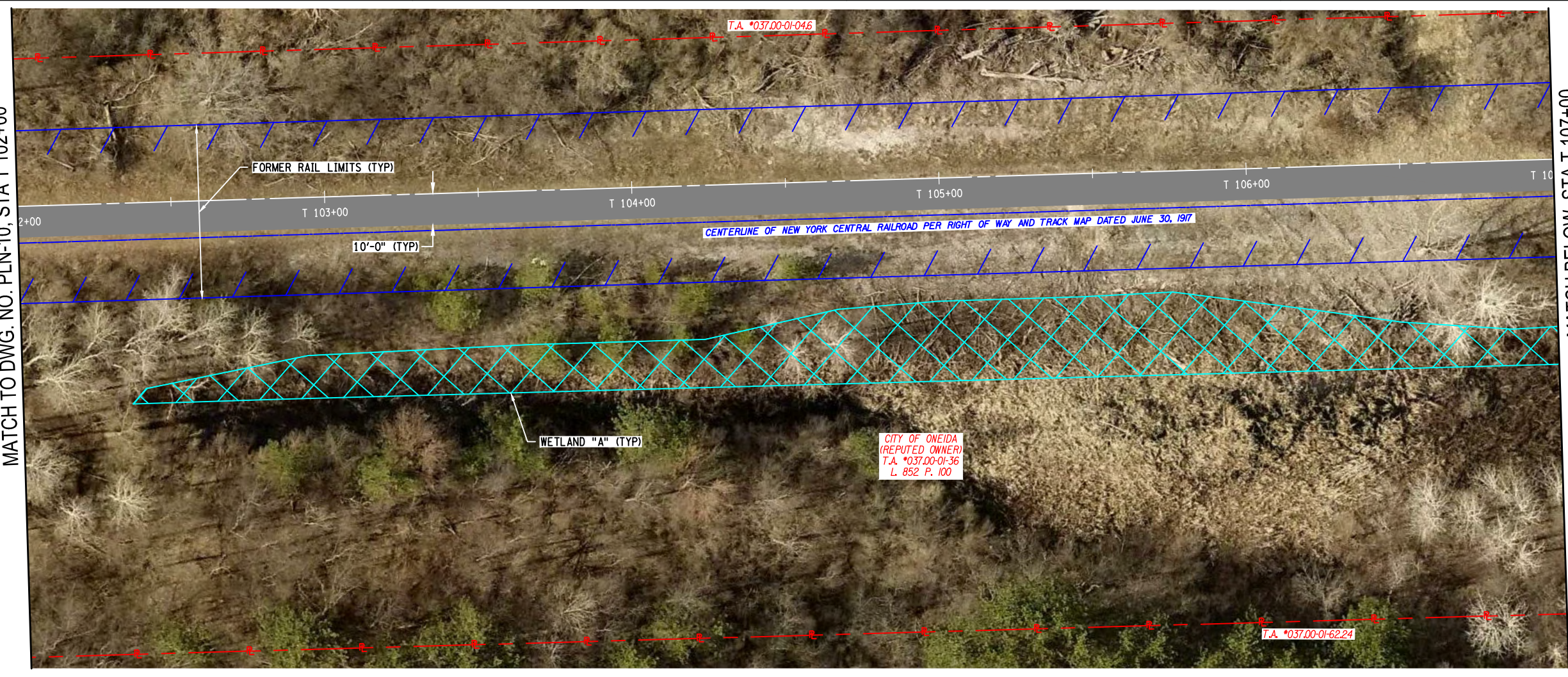
Jan 26, 2016 - 12:27pm - CITY OF ONEIDA\EA2.002.001 Oneida Rail Trail\Design\CADD\Sheet Files\265048_PLN_10.dwg

Jan 26, 2016 - 12:31pm - C:\PROJECTS\ONEIDA\160202\001 Oneida Rail Trail\Design\CADD\Sheet Files\265048_PLN_11.dwg

MATCH TO DWG. NO. PLN-10, STA T 102+00

C

B



MATCH BELOW, STA T 107+00

C

B

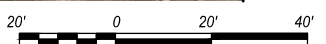
MATCH ABOVE, STA T 107+00

A



MATCH TO DWG. NO. PLN-12, STA T 112+25

A



C&S Engineers, Inc.
499 Col. Eileen Collins Blvd.
Syracuse, New York 13212
Phone: 315-455-2000
Fax: 315-455-9667
www.cscos.com

NOT FOR
CONSTRUCTION

ONEIDA RAIL TRAIL
PROJECT
PIN 2650.45, 2650.48
CITY OF ONEIDA, NEW YORK

MARK	DATE	DESCRIPTION
REVISIONS		
PROJECT NO: E42.002.001		
DATE: JANUARY 2016		
DRAWN BY: KAH		
DESIGNED BY: MAA		
CHECKED BY: XXX		
NO ALTERATION PERMITTED HEREON EXCEPT AS PROVIDED UNDER SECTION 7209 SUBDIVISION 2 OF THE NEW YORK EDUCATION LAW		

TRAIL
PLAN

PLN-11

SHEET OF

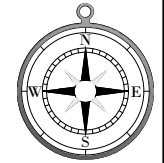
Copyright ©

1

2

3

4



C&S Engineers, Inc.
 499 Col. Eileen Collins Blvd.
 Syracuse, New York 13212
 Phone: 315-455-2000
 Fax: 315-455-9667
 www.cscos.com

**NOT FOR
CONSTRUCTION**

**ONEIDA RAIL TRAIL
PROJECT**
PIN 2650.45, 2650.48
CITY OF ONEIDA, NEW YORK

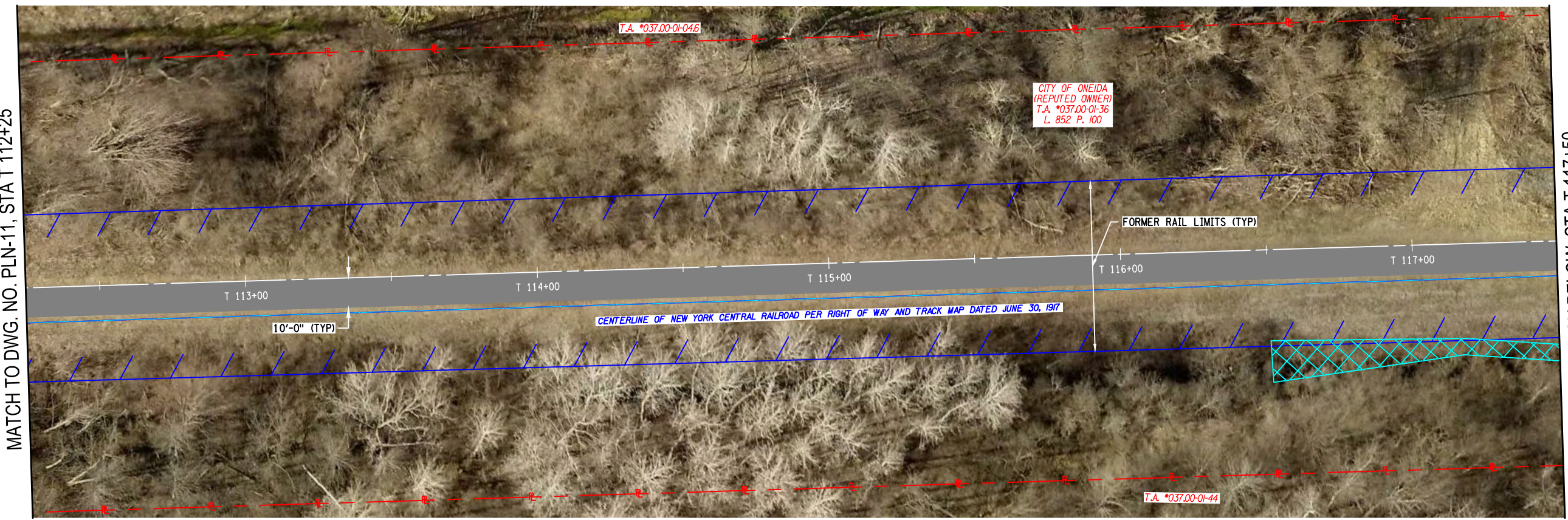
MARK	DATE	DESCRIPTION
REVISIONS		
PROJECT NO: E42.002.001		
DATE: JANUARY 2016		
DRAWN BY: KAH		
DESIGNED BY: MAA		
CHECKED BY: XXX		
NO ALTERATION PERMITTED HEREON EXCEPT AS PROVIDED UNDER SECTION 7209 SUBDIVISION 2 OF THE NEW YORK EDUCATION LAW		

**TRAIL
PLAN**

PLN-12

SHEET OF

Copyright ©



Jan 26, 2016 - 12:35pm - C:\Project\E42 - CITY OF ONEIDA\E42.002.001 Oneida Rail Trail\Design\AADD\Sheet Files\265048_PLN_12.dwg

1

2

3

4



C&S
COMPANIES

C&S Engineers, Inc.
499 Col. Eileen Collins Blvd.
Syracuse, New York 13212
Phone: 315-455-2000
Fax: 315-455-9667
www.cscos.com

**NOT FOR
CONSTRUCTION**

**ONEIDA RAIL TRAIL
PROJECT**

PIN 2650.45, 2650.48
CITY OF ONEIDA, NEW YORK

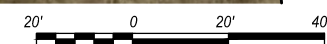
MARK	DATE	DESCRIPTION
REVISIONS		
PROJECT NO: E42.002.001		
DATE: JANUARY 2016		
DRAWN BY: KAH		
DESIGNED BY: MAA		
CHECKED BY: XXX		
NO ALTERATION PERMITTED HEREON EXCEPT AS PROVIDED UNDER SECTION 7209 SUBDIVISION 2 OF THE NEW YORK EDUCATION LAW		

**TRAIL
PLAN**

PLN-13

SHEET OF

Copyright ©



Jan 26, 2016 - 12:38pm - CITY OF ONEIDA\EA42.002.001 - Oneida Rail Trail\Design\CADD\Sheet Files\265048_PLN_13.dwg

1

2

3

4



C&S Engineers, Inc.
499 Col. Eileen Collins Blvd.
Syracuse, New York 13212
Phone: 315-455-2000
Fax: 315-455-9667
www.cscos.com

NOT FOR
CONSTRUCTION

ONEIDA RAIL TRAIL PROJECT

PIN 2650.45, 2650.48
CITY OF ONEIDA, NEW YORK

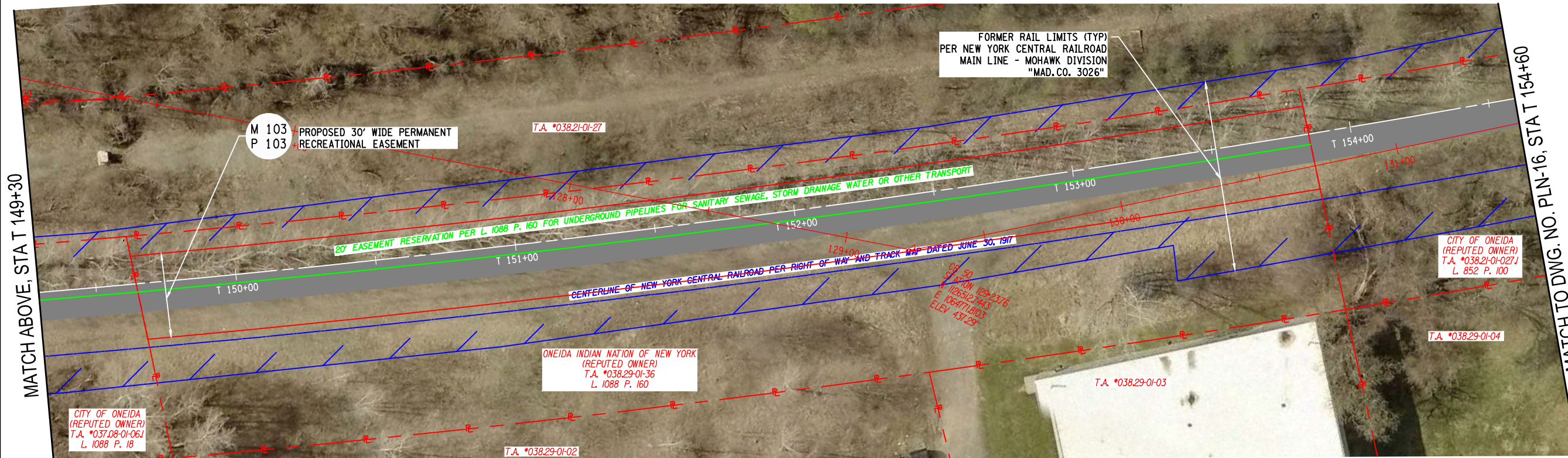
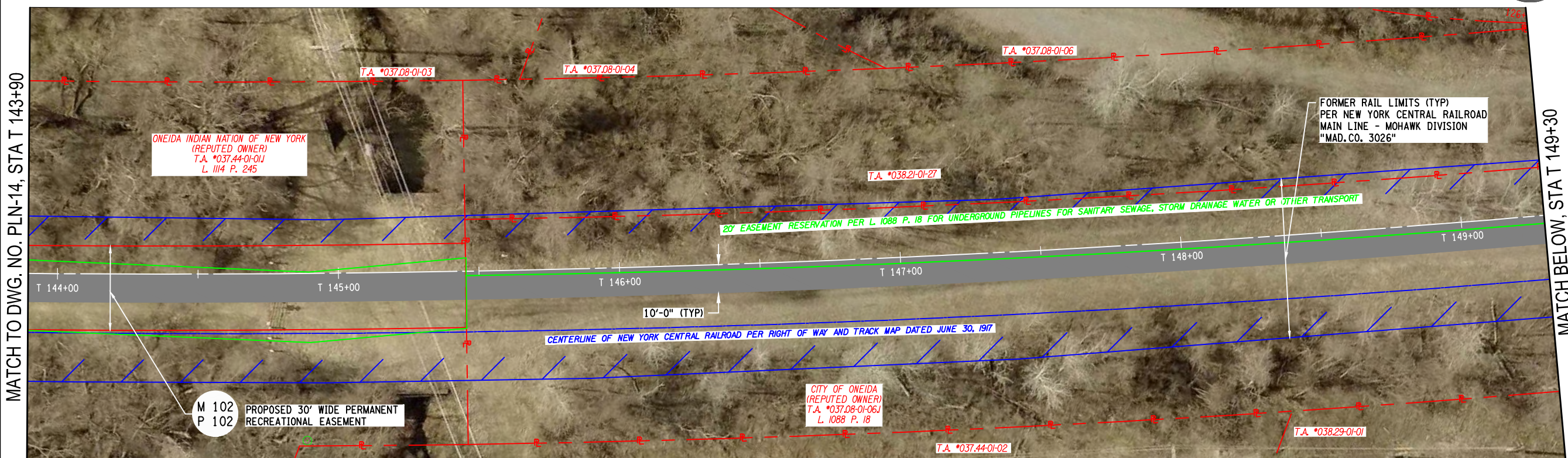
MARK	DATE	DESCRIPTION
REVISIONS		
PROJECT NO: E42.002.001		
DATE: JANUARY 2016		
DRAWN BY: KAH		
DESIGNED BY: MAA		
CHECKED BY: XXX		
NO ALTERATION PERMITTED HEREON EXCEPT AS PROVIDED UNDER SECTION 7209 SUBDIVISION 2 OF THE NEW YORK EDUCATION LAW		

TRAIL
PLAN

PLN-15

SHEET OF

Copyright ©



Jan 26, 2016 - 12:46pm - C:\PROJECTS\ONEIDA\PLN-15.dwg