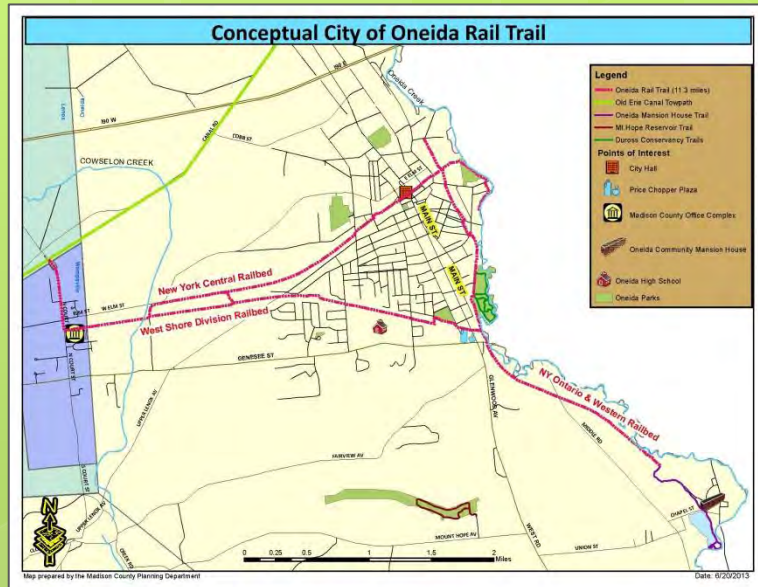


# ONEIDA RAIL TRAIL



Repurposing  
an existing  
historic asset  
as a new  
community  
destination



## **ONEIDA IMPROVEMENT COMMITTEE**

P.O. BOX 55 ONEIDA, NEW YORK 13421

- **Incorporated as a 501(c)(4) Civic Organization in 1992**
- **Octoberfest, Oneida Block Party**
- **Donated over \$40K in the community since 2000**
- **Donations to Memorial Day Parade, Greater Kallet Civic Center**
- **Purchased 1929 Worlds Fair benches and ornamental light poles in Higinbotham Park, Hanging Flower Baskets Downtown Oneida**
- **Reorganized as a 501(c)(3) October 2012**
- **Ability to pursue grants – Donations Tax Deductible**

**WE WON!**

# COMMUNITY PROJECT

Voted #1 Project  
CNY Community Foundation  
Grant December 2012



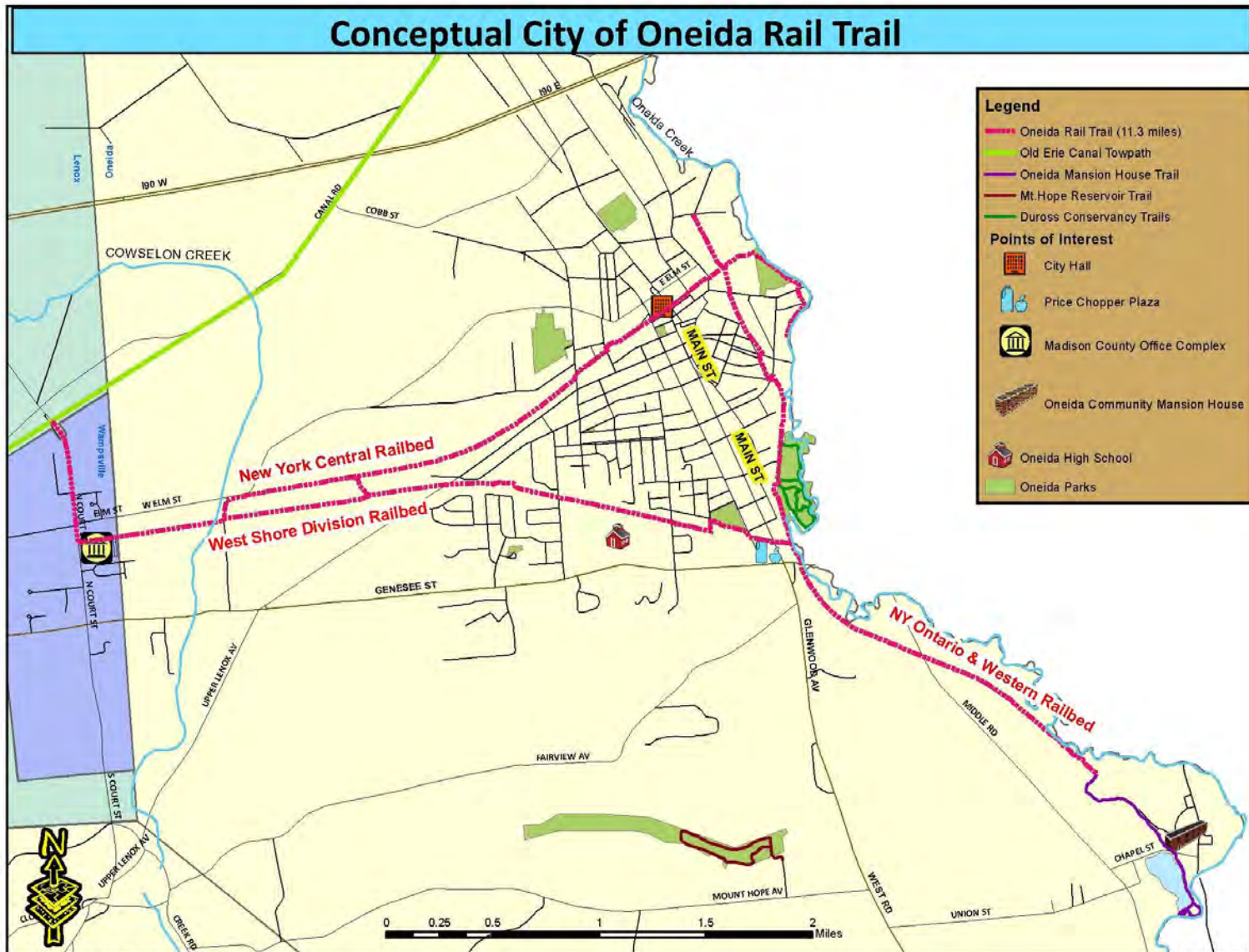
Identified in the City of Oneida  
Comprehensive Plan:

“Formerly  
designate railroad  
right-of-ways as  
greenways and  
initiate  
implementation  
of trail system.”



**Thank you for  
your votes!**

# Oneida Rail Trail



Map prepared by the Madison County Planning Department

Date: 6/20/2013

Connecting people....



To Community Destinations



Neighborhoods



Downtown



Nature



Tourism



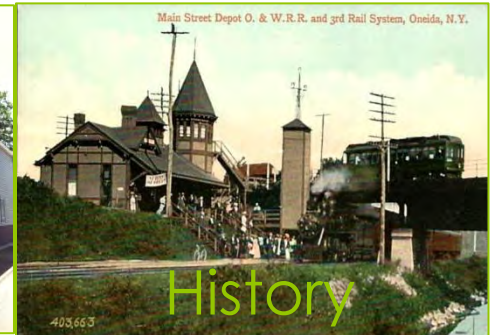
Parks



Schools

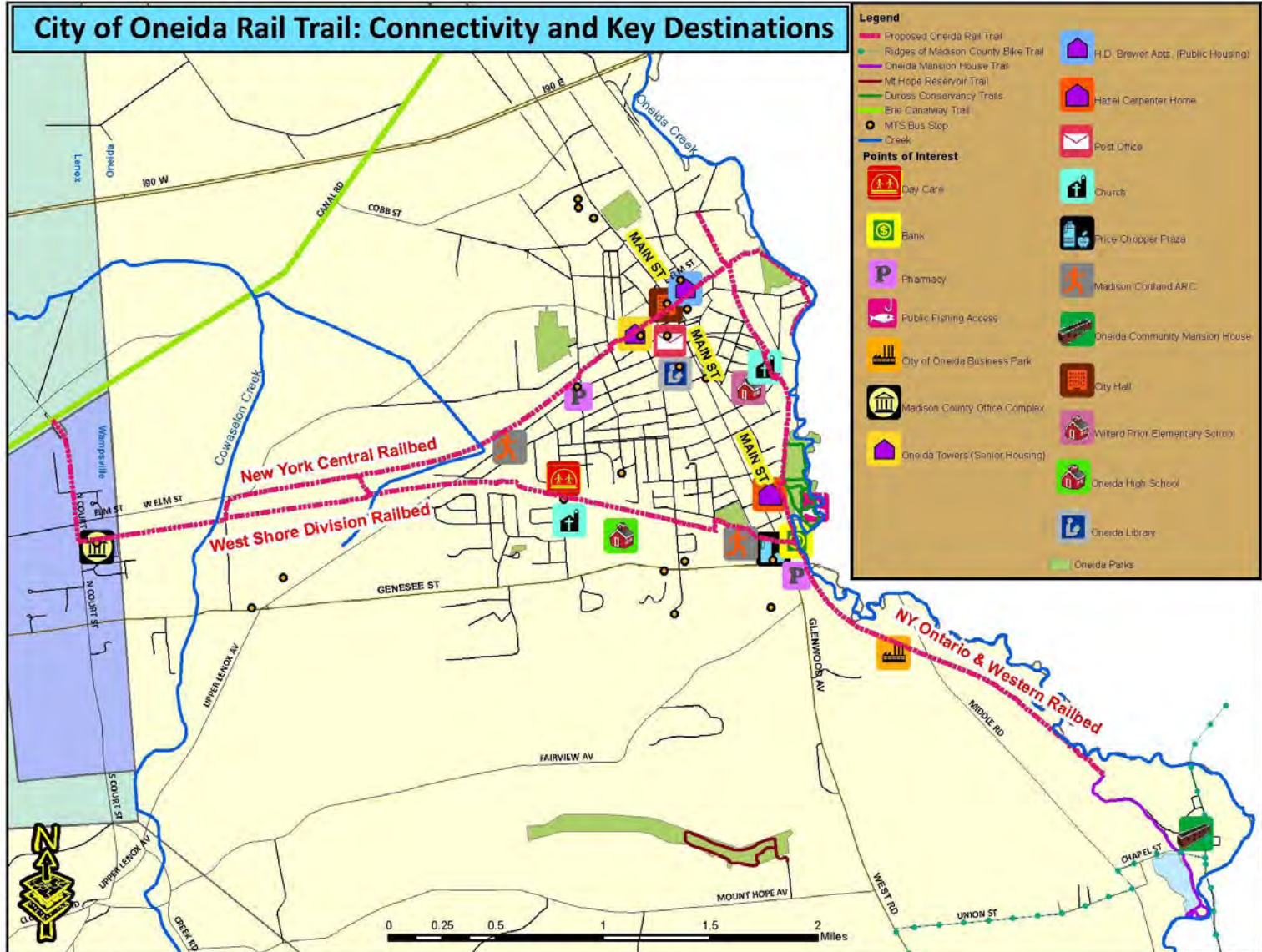


Shopping



History

# Connectivity



Map prepared by the Madison County Planning Department

Date: 6/20/2013

## City of Oneida Rail Trail: Historical Significance

### Legend

-  Proposed Oneida Rail Trail
-  Oneida Parks
-  Duross Conservancy Trails
-  Oneida Mansion House Trail



Looking east in 1919  
Red Bank Water Reservoir when it was in active use in 1919. The NYC mainline is in the left distance, the West Shore line on the right.



New York Central Rail Station



NY Ontario and Western Railroad Station

Former National Casket Company located along the New York Central Railline



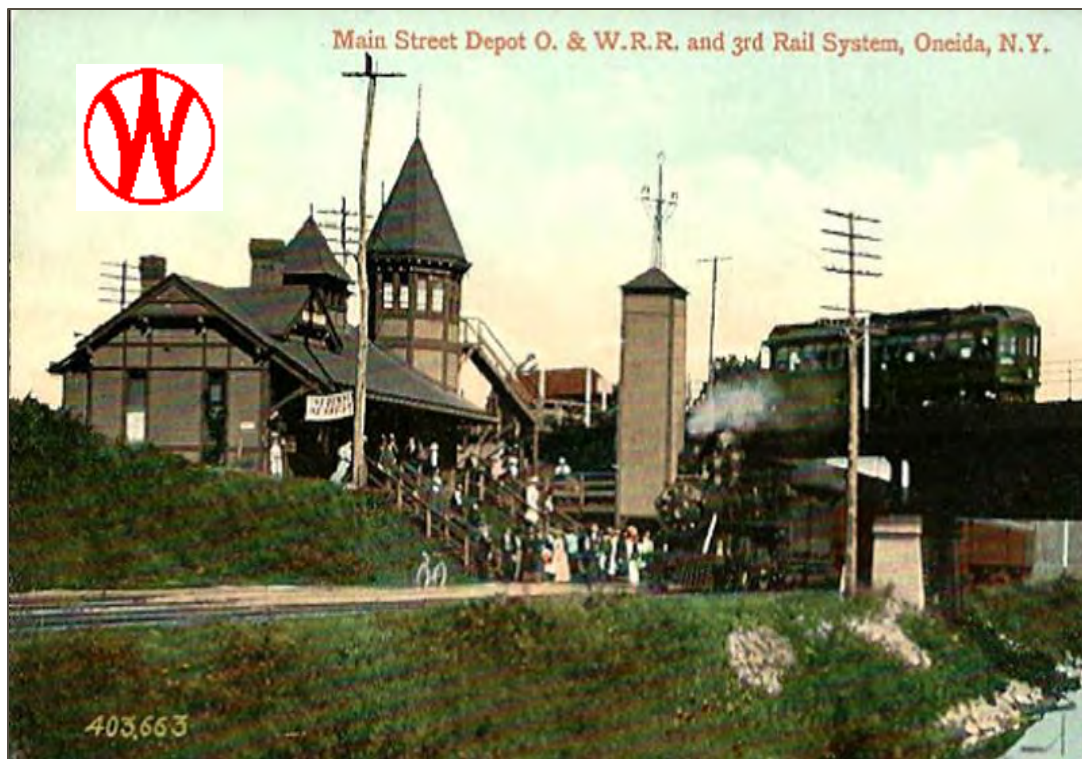
Main Street looking north in 1900's  
Main Street Depot and NY Ontario & Western Railroad



Note: Railroads played an important part in the development of New York State by facilitating trade and westward expansion. Rail Trails are a way to preserve these railway corridors and offer future generations the chance to connect to the past and learn about history. This map represents just some of the many locations that could be highlighted on the historical kiosks along the Oneida Rail Trail.

## New York, Ontario & Western Railway

- Established in 1873 – March 29, 1957
- Developed tourism to Catskills and Sylvan Beach.
- Oswego was hoped to develop as a great port to the west
- Tourism all but ceased with Great Depression
- Scranton, PA coal mines provided revenue
- Coal mines failed in 1937



### Historical Spot of the NYO&WRy Today

Plans include an  
NYO&WRy  
historical Kiosk/Rail  
themed Bike Rack



# NYO&WRy Station Wilson Street



# New York Central Railroad

- Established 1839 – 1968
- 1839 Sands Higinbotham negotiates that every train stop in Oneida
- Faster service than the Erie Canal – Extensive & time consuming locks
- Prohibited from carrying freight until ban dropped in 1858



# West Shore Railroad

- Established 1883 – 1886
- Organized as a competitor to the NY Central
- 1886 bought by NY Central
- 1907 3<sup>rd</sup> rail electrified service between Utica/Syracuse
- 1959 Passenger service ends



# 10 Principles of Smart Growth

1. Mix Land Uses
2. Take Advantage of Compact Design
3. Create a Range of Housing Opportunities and Choices
4. Create Walkable Communities
5. Foster Distinctive, Attractive Communities with a Strong Sense of Place
6. Preserve Open Space, Farmland, Natural Beauty, and Critical Environmental Areas
7. Strengthen and Direct Development Toward Existing Communities
8. Provide a Variety of Transportation Options
9. Make Development Decisions Predictable, Fair and Cost Effective
10. Encourage Community and Stakeholder Collaboration



# Benefits of Greenways and Trails



New York Central Railbed  
takes trail users through  
the heart of  
Oneida's downtown

Trails can

- Boost local economies



# Benefits of Greenways and Trails



West Shore Railbed  
adjacent to Hunt Valley Rd. Subdivision

Trails can

- Boost local economies
- Improve quality of life



New York Central Railbed  
along Liberty St. and adjacent to Oneida Towers

# Benefits of Greenways and Trails



West Shore Railbed  
at Sayles St. adjacent to Oneida  
High School

Trails can

- Boost local economies
- Improve quality of life
- Good for health



West Shore Railbed  
at Hubbard Pl.

# Benefits of Greenways and Trails



West Shore Railroad at  
culvert overpass  
adjacent to Oneida High School

Trails can

- Boost local economies
- Improve quality of life
- Good for health
- Good for environment



West Shore Railbed at Cowselon Creek

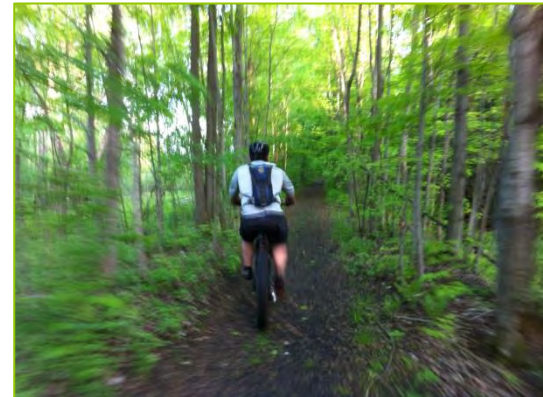
# Benefits of Greenways and Trails



NYCRR between  
N. Willow St. & Hubbard Place  
Heading west to Wampsville

## Trails can

- Boost local economies
- Improve quality of life
- Good for health
- Good for environment
- Better way to get around



NY Ontario & Western RR to Mansion House

# Benefits of Greenways and Trails



## Trails can

- Boost local economies
- Improve quality of life
- Good for health
- Good for environment
- Better way to get around
- Preserve historic heritage

West Shore bridge with remains of  
Oneida Railway Company markings -  
ORCo 1902 cast in concrete,  
The only remaining historical artifact known

# Benefits of Greenways and Trails



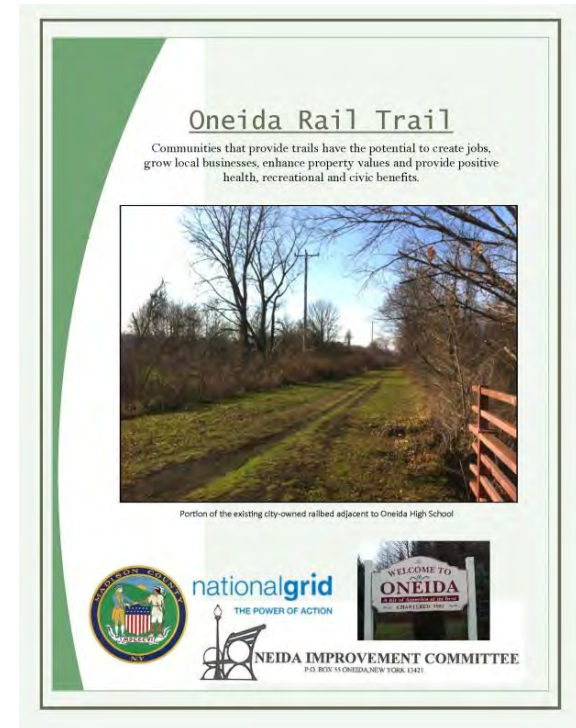
2013 Trail Clean-up Days

Trails can

- Boost local economies
- Improve quality of life
- Good for health
- Good for environment
- Better way to get around
- Preserve historic heritage
- Enhance civic engagement

## 2013 Milestones

- Oneida Rail Trail Committee formed - meets last Thursday of every month
- Project wins CNY Community Foundation Grant
- Nu-Tech donates two parcels for parkland



## Letters of Support

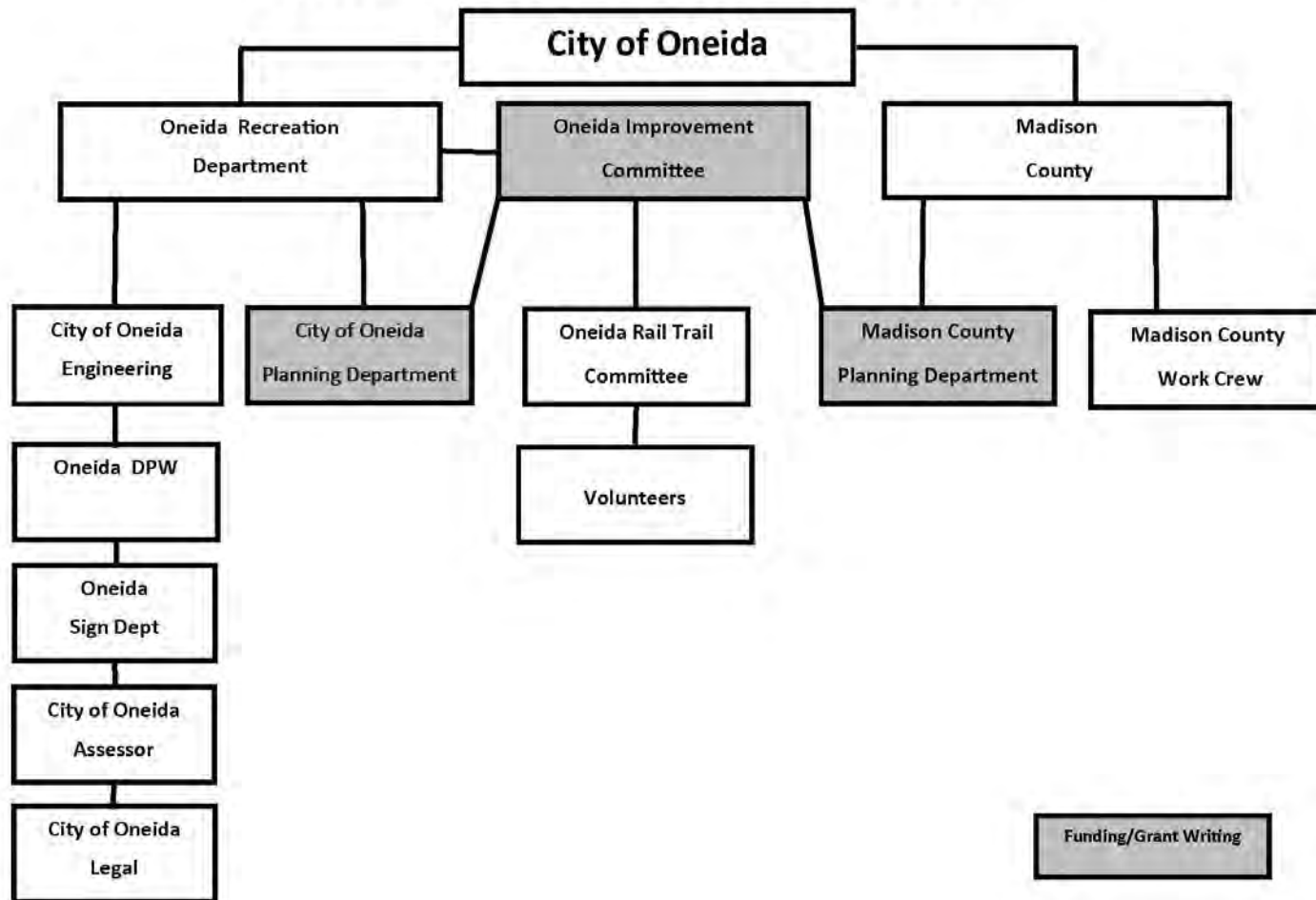
- State Senator David Valesky
- Assemblyman Bill Magee
- U.S. Representative Richard Hanna
- CNY Regional Planning and Development Board
- Madison County Board of Supervisors
- Madison County Planning Department
- New York State Recreation & Park Society
- Madison County Industrial Development Agency
- Rails to Trails Conservancy
- Parks & Trails New York
- Oneida Improvement Committee, Inc.
- Oneida Healthcare
- Oneida High School
- Oneida Housing Authority
- Madison County Chapter of Trout Unlimited
- Madison Cortland ARC
- Stoneleigh Housing, INC.
- Oneida Community Mansion House

## The Possibilities...



[https://www.youtube.com/watch?feature=player\\_embedded  
&v=sATiMYWQtG4](https://www.youtube.com/watch?feature=player_embedded&v=sATiMYWQtG4)

## Oneida Rail Trail Structure



**We Need YOU !**

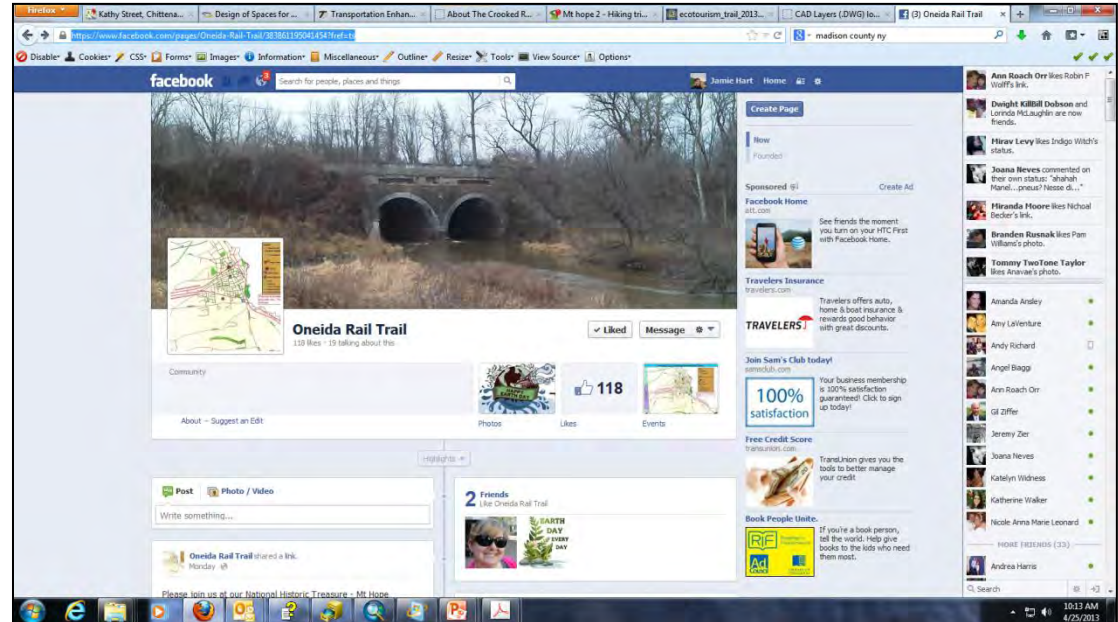
# HOW CAN I HELP?

- Join the Oneida Rail Trail Facebook page!
- Volunteer – Sign up Sheet
- Send a letter of Support for the Oneida Rail Trail!



**OWEN W.  
SAYS  
WE NEED YOU!**

# Volunteers!



“If there is one essential ingredient to creating trails and trail systems, it’s people. All the land and financing in the world won’t blaze a trail if there aren’t people championing the project.”

- Bay Area Ridge Trail Council

Jamie Hart  
Senior Planner  
Madison County  
Planning Department  
(315) 366-2378  
[Jamie.hart@madisoncounty.ny.gov](mailto:Jamie.hart@madisoncounty.ny.gov)

Patti Meakin  
Secretary/Treasurer  
Oneida Improvement  
Committee  
(315) 363-6440  
[Pmeakin2@gmail.com](mailto:Pmeakin2@gmail.com)